

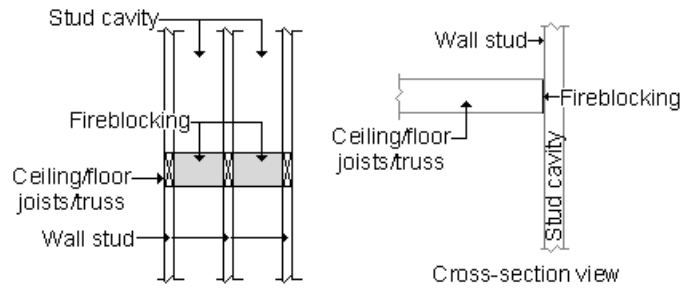
**FIREBLOCK/DRAFTSTOPPING INFORMATION**  
 CODE INFORMATION FOR 1 & 2-FAMILY DWELLINGS  
 FOR WOOD-FRAMED CONSTRUCTION

**FIREBLOCK**

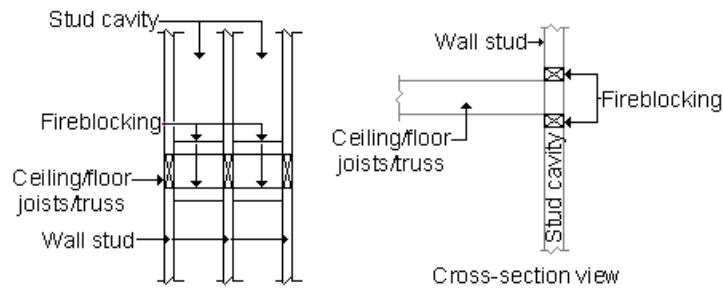
Fireblocking resists the free passage of flame from one area to other areas of the building through concealed spaces. Fireblocking shall be provided to cut off all concealed draft openings (both vertical and horizontal) and to form an effective fire barrier between stories, and between a top story and the roof space.

**Locations**

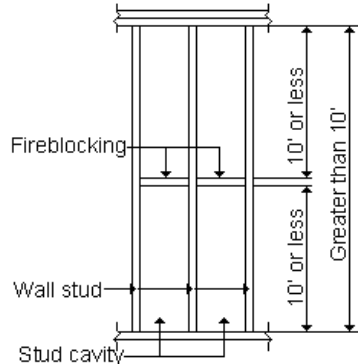
- In concealed spaces of stud walls and partitions, including furred spaces and parallel rows of studs or staggered studs: vertically at ceiling and floor areas.



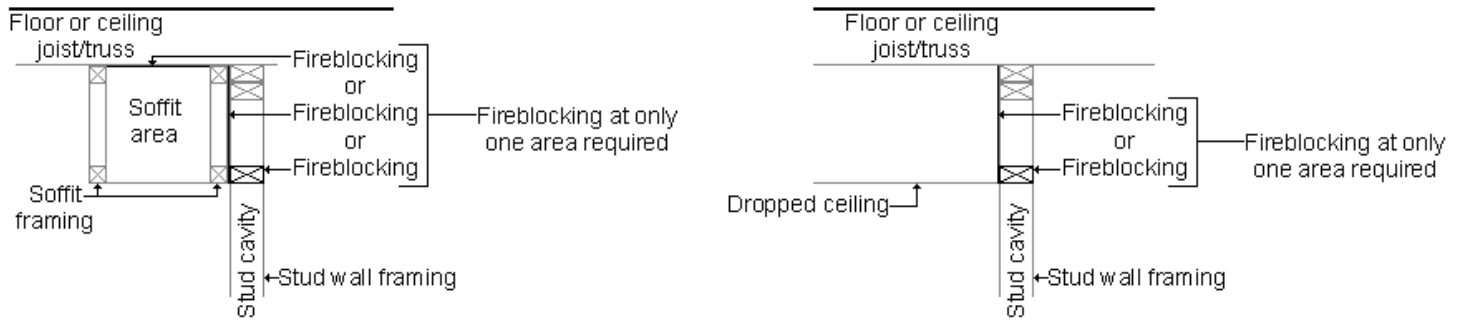
-OR-



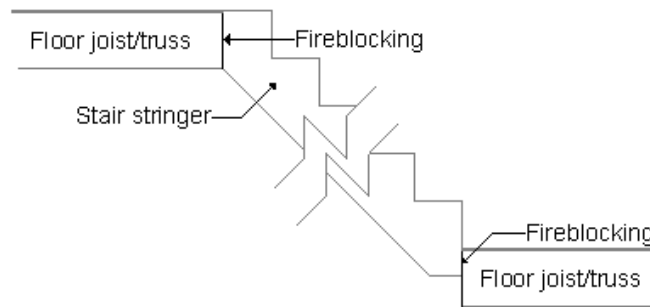
- In concealed spaces of stud walls and partitions, including furred spaces and parallel rows of studs or staggered studs: horizontally at intervals not exceeding 10 feet (').



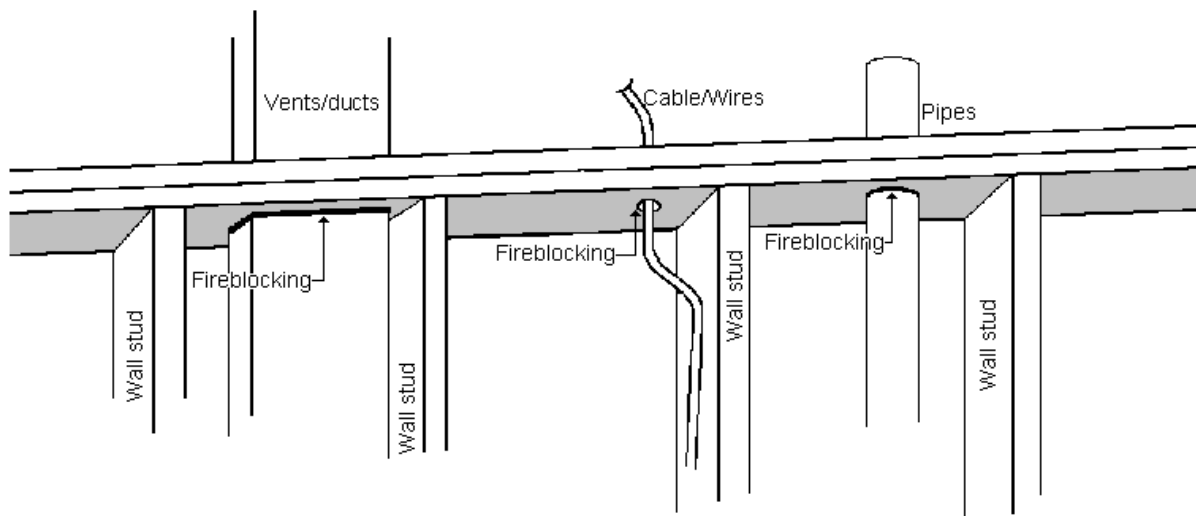
- At all interconnections between concealed vertical and horizontal spaces such as occur at soffits, drop ceilings and cove ceilings.



- In concealed spaces between stair stringers at the top and bottom of the run.

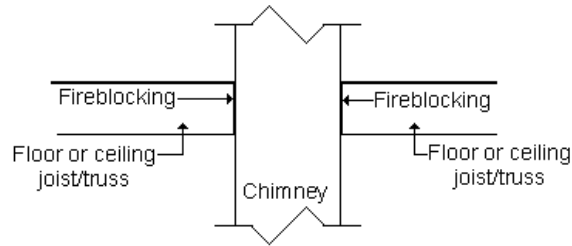


- At openings around vents, pipes, ducts, cables and wires at ceiling and floor level, with approved material to resist the free passage of flame and products of combustion.



In addition to the materials listed below, fireblocking at vents, pipes, ducts, cables and wires may consist of non-flammable caulk or non-flammable expanding foam.

- Chimneys and fireplaces: at all spaces between chimneys and floors and ceilings through which chimneys pass shall be fireblocked with **non combustible material securely fastened in place**. The fireblocking of spaces between chimneys and wood joists, beams or headers shall be self-supporting or be placed on strips of metal or metal lath laid across the spaces between combustible material and the chimney.



- Fireblocking of cornices of a two-family dwelling is required at the line of dwelling unit separation.

## Materials

Except as provided as provided as material at vents, pipes, ducts, cables and wires fireblocking shall consist of the following materials:

- 2-inch nominal lumber
- Two thicknesses of 1-inch nominal lumber with broken lap joints
- One thickness of 23/32-inch wood structural panels with joints backed by 23/32-inch wood structural panels
- One thickness of 3/4-inch particle board with joints backed by 3/4-inch particle board
- 1/2-inch gypsum board
- 1/4-inch cement-based millboard
- Batts or blankets of mineral wool or glass fiber or other approved materials
  - Must be installed in such a manner as to be securely retained in place
- Batts or blankets of mineral or glass fiber or other approved non-rigid materials shall be permitted for compliance with the 10 foot horizontal fireblocking in walls constructed using parallel rows of studs or staggered studs.
- Unfaced fiberglass batt insulation used as fireblocking shall fill the entire cross section of the wall cavity to a minimum height of 16-inches measured vertically. When piping, conduit or similar obstructions are encountered, the insulation shall be packed tightly around the obstruction.
- Loose-fill insulation material **shall not** be used as a fireblock unless specifically tested in the form and manner intended for use to demonstrate its ability to remain in place and retard the spread of fire and hot gases.

**Whatever materials are used, it is important to maintain the integrity of all fireblocks.**

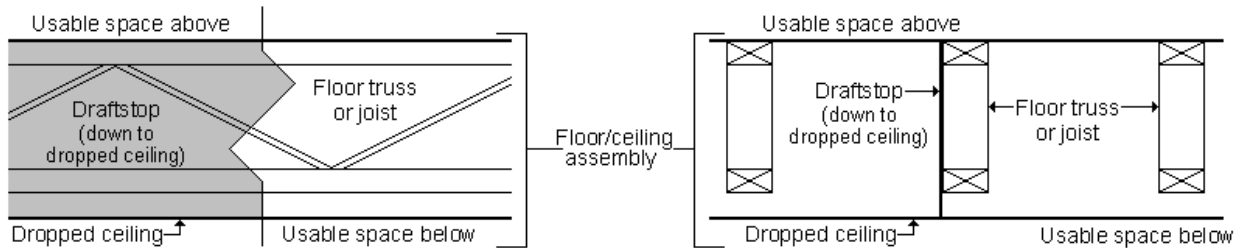
## DRAFTSTOP

Draftstopping is provided to restrict the movement of air within open spaces of concealed areas of building components such as floor-ceiling assemblies. Draftstops shall be installed so that the area of the concealed space does not exceed 1,000 square feet. Draftstopping shall divide the concealed space into approximately equal areas.

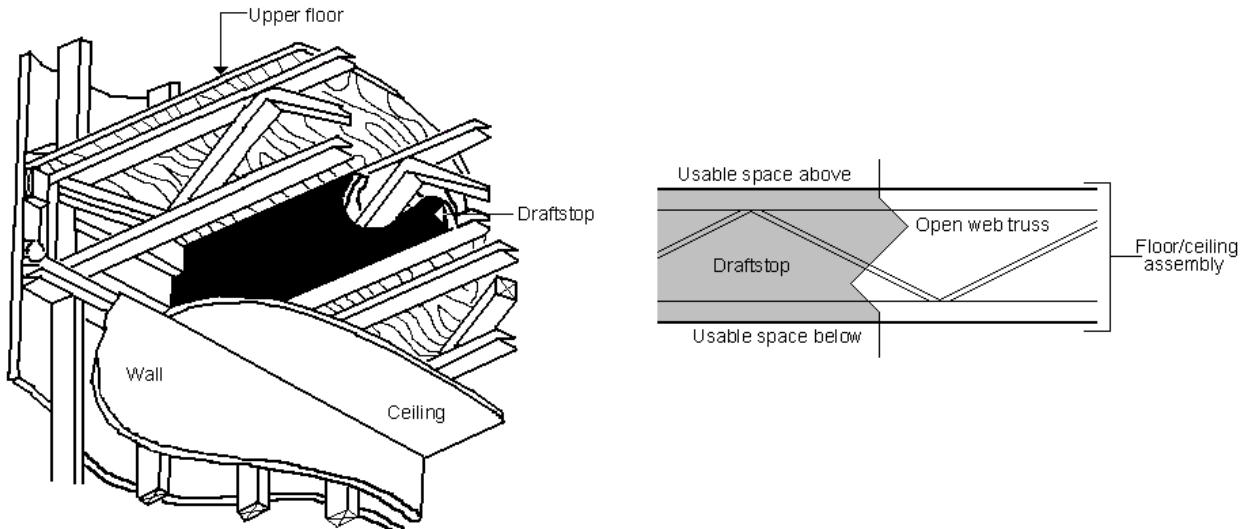
### Locations

Draftstopping must be provided when there is usable space both above and below an enclosed space of a floor/ceiling assembly. Where the assembly is enclosed by a floor membrane above and a ceiling membrane below draftstopping shall be provided in floor/ceiling assemblies under the following circumstances:

- Ceiling is suspended under the floor framing.



- Floor framing is constructed of truss-type open-web or perforated members.



Draftstop shall be installed parallel to the floor framing members unless otherwise approved by the building official.

## Materials

- Not be less than ½-inch gypsum board
- 3/8-inch wood structural panels
- 3/8-inch Type 2-M-W particleboard
- Other approved materials adequately supported

Draftstopping shall be installed parallel to the floor framing members unless otherwise approved by the building official; it shall be installed so that the area of the concealed space does not exceed 1,000 square feet and divided into approximately equal areas.

**Whatever materials are used, it is important to maintain the integrity of all draftstopping.**

*The information in this handout is just an overview. See the 2007 Minnesota State Building Code for complete information. All details and pictures in this handout are examples; other methods of construction may be approved by the Building Safety Department. Questions regarding design and cost should be referred to a professional builder or architect.*