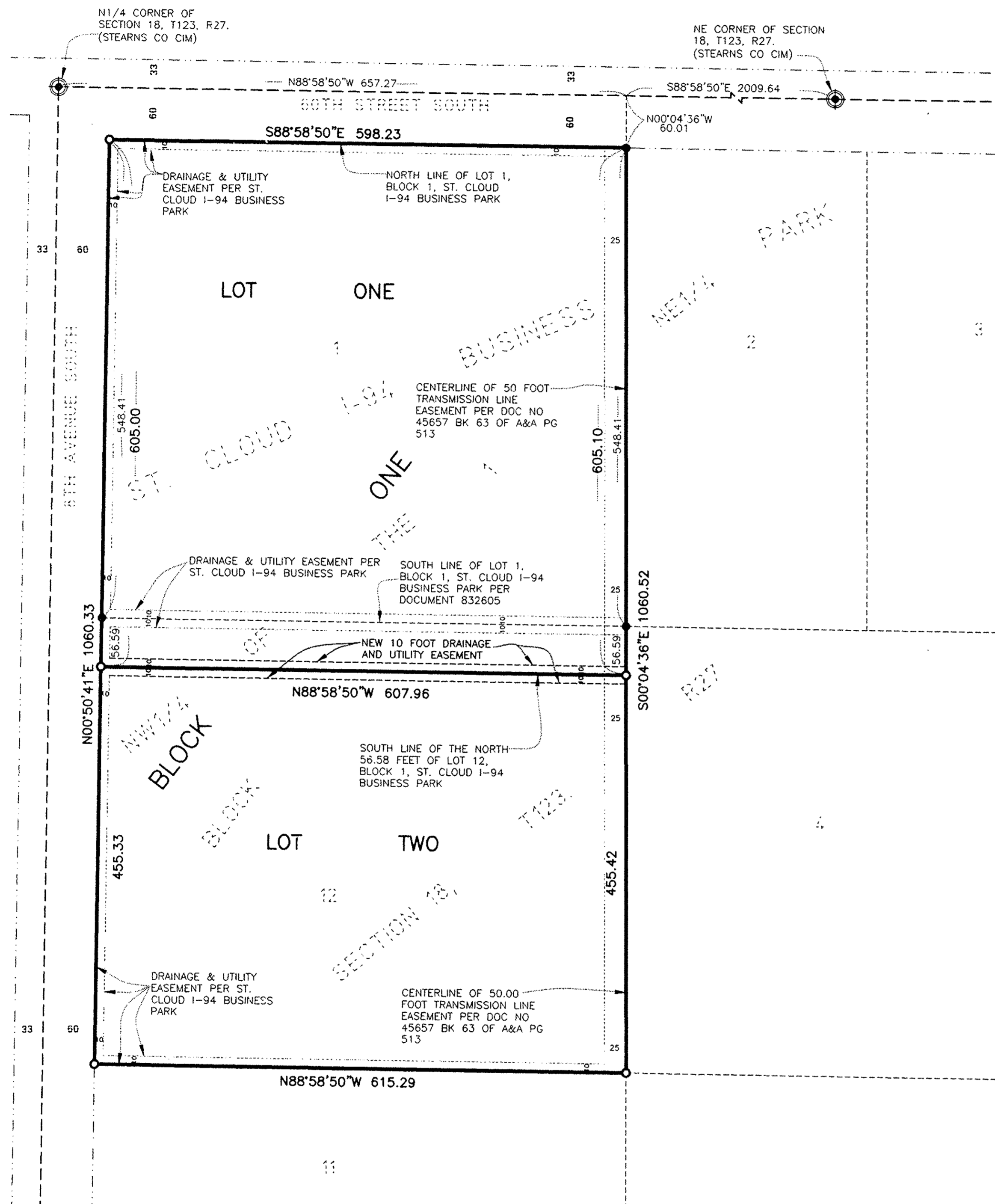


# ST. CLOUD I-94 BUSINESS PARK 11



KNOW ALL MEN BY THESE PRESENTS: That The Housing and Redevelopment Authority in and for the City of St. Cloud, a Minnesota municipal corporation under the laws of the State of Minnesota owners and proprietors, of the following described property situated in the City of St. Cloud, County of Stearns, Minnesota to-wit:

Lot 1 and Lot 2 of BLOCK 1, ST. CLOUD I-94 BUSINESS PARK, according to the recorded plat thereof, Stearns County, Minnesota.

Have caused the same to be surveyed and platted as ST. CLOUD I-94 BUSINESS PARK 11, and do hereby dedicate and donate to the public for public use forever the easements as shown on this plat for drainage and utility purposes only.

In witness whereof said The Housing and Redevelopment Authority in and for the City of St. Cloud, a Minnesota municipal corporation under the laws of the State of Minnesota has caused these presents to be signed by its proper officers this 10 day of September 2007.

*Antony Goddard* *Bruce Thielman*  
 Antony Goddard, Chair Bruce Thielman, Executive Director

STATE OF MINNESOTA  
 COUNTY OF STEARNS

The foregoing instrument was acknowledged before me this 10 day of September 2007, by Antony Goddard, as Chair and Bruce Thielman, as Executive Director of The Housing and Redevelopment Authority in and for the City of St. Cloud, a Minnesota municipal corporation under the laws of the State of Minnesota, on behalf of said corporation.

*Shannon Adamski* (Notary Signature) Shannon Adamski (Notary Printed Name)

NOTARY PUBLIC, Benton COUNTY, MINNESOTA

MY COMMISSION EXPIRES Jun. 31, 2008

Land Surveyor

I hereby certify that I have surveyed and platted the property described on this plat as ST. CLOUD I-94 BUSINESS PARK 11, that this plat is a correct representation of the survey, that all distances are correctly shown on the plat in feet and hundredths of a foot, that all monuments have been or will be correctly placed in the ground as shown within one year after recording, or sooner, as specified by the approving local governmental unit; that the outside boundary lines are correctly designated on the plat and that there are no wet lands as defined in MS 505.021, Subd. 1, or public highways to be designated other than as shown.

*Linda H. Brown*  
 LINDA H. BROWN, LAND SURVEYOR,  
 MINNESOTA LICENSE NUMBER 23682

STATE OF MINNESOTA  
 COUNTY OF STEARNS

The foregoing Surveyor's Certificate was acknowledged before me this 10<sup>th</sup> day of Sept 2007, by Linda H. Brown, Land Surveyor, Minnesota License Number 23682.

*Cynthia S. Gons* (Notary Signature) Cynthia S. Gons (Notary Printed Name)

NOTARY PUBLIC, Benton COUNTY, MINNESOTA

MY COMMISSION EXPIRES Jan 31, 2012

CITY OF ST CLOUD

Pursuant to Article 8, Section 1 of St. Cloud Subdivision Ordinance, this administrative plat has been approved by the Planning Director of the City of St. Cloud, Minnesota, this 11 day of SEPT. 2007.

*Walter Haeger* *Cynthia S. Gons*  
 PLANNING DIRECTOR ATTEST CLERK

STEARNS COUNTY SURVEYOR

I hereby certify that this plat has been examined and recommended for approval the 13<sup>th</sup> day of Sept. 2007.

*Dennis H. Krom*  
 STEARNS COUNTY SURVEYOR, MINNESOTA LICENSE NUMBER 23045

STEARNS COUNTY AUDITOR / TREASURER

I hereby certify that the taxes on the land described hereon are paid for the year 2007 and all years prior to the year 2007 and transfer entered.

Date September 14, 2007

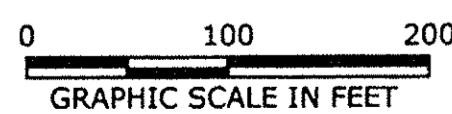
*Kendy Schrijfels* *Brenda Stanger*  
 STEARNS COUNTY AUDITOR / TREASURER DEPUTY AUDITOR / TREASURER  
 TAX PARCEL NUMBER 82-50617-100 + 82-50617-122

STEARNS COUNTY RECORDER

Document Number 1238841

I hereby certify that this instrument was filed in the office of the County Recorder for record on this 14 day of September 2007 at 2:23 o'clock P.m. and was duly recorded in Plat Cabinet

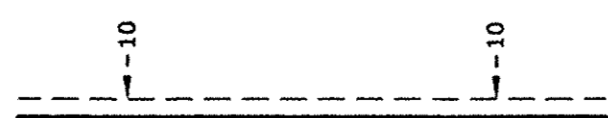
*Diane Grundhauser* *Carla Dewitt*  
 STEARNS COUNTY RECORDER By Deputy  
 STEARNS COUNTY, MINNESOTA



- DENOTES IRON MONUMENT FOUND
- DENOTES 1/2 INCH BY 14 INCH IRON MONUMENT SET WITH PLASTIC PLUG INSCRIBED WITH 23682
- ⊕ DENOTES STEARNS COUNTY MONUMENT

BEARING ORIENTATION  
 BASED ON THE NORTH LINE OF LOT 1, BLOCK 1, ST. CLOUD I-94 BUSINESS PARK, STEARNS COUNTY, MINNESOTA, WHICH HAS A RECORD BEARING OF SOUTH 88 DEGREES 58 MINUTES 50 SECONDS EAST.

DRAINAGE & UTILITY EASEMENTS  
 SHOWN THUS:



BEING 10 FEET IN WIDTH AND ADJOINING STREET RIGHT OF WAY LINES AS SHOWN ON THIS PLAT, UNLESS OTHERWISE DIMENSIONED.